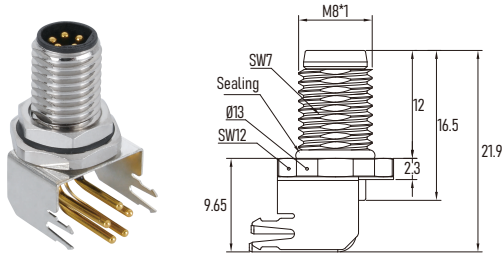
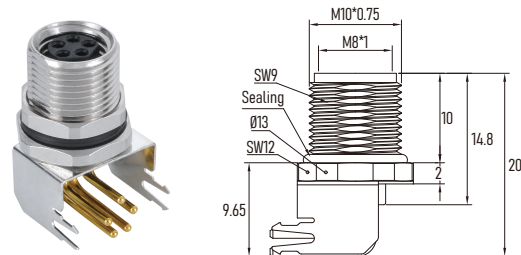


M8 panel connector, front side fastening, PCB Contacts, EMI-Shielded, 90° right angled
M8 板端连接器 板前锁 PCB弯针型 屏蔽型

Male 公头



Female 母头



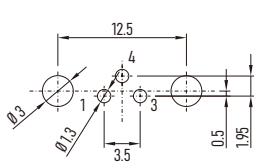
Connector Technical data 技术参数

Contacts No. 芯数/位	3Pin	4Pin	5Pin
Front View 正视图			
Reference Standard 参照标准	IEC 61076-2-104		3A
Rated current 额定电流	3A		30V
Rated voltage 额定电压	60V		500V
Impulse voltage 脉冲高压	1500V		
Locking system 锁紧方式	M8 x 1.0 screw / M8 螺丝锁紧		
Tightening Torque 螺丝扭矩	Recommend/ 建议: 0.3Nm, Max/ 最大: 0.6Nm		
Termination 接线方式	PCB Dip Soldering / PCB浸焊		
Rated temperature 温度范围	-25 °C ... +80 °C		
Insulation resistance 绝缘电阻	≥100MΩ		
Contact resistance 接触电阻	≤5mΩ		
Contact carrier 胶芯材料	TPU + GF		
Screw nut 螺丝材料	Brass, CNC, Nickel-plated 黄铜 镀镍 机加工		
Contact Pin 端子	Brass 黄铜 / Phosphor bronze 磷青铜		
Contacts plating 端子镀层	Au (Gold) 镀金		
O-ring 密封圈	FKM/ Silicon 氟橡胶/硅胶		
Protection degree 防护等级	IP67, IP68		
Pollution degree 污染等级	3		

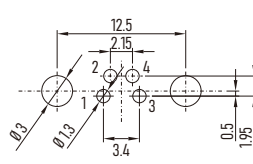
Ordering No. 订购料号

Poles 芯数	Male 公头	Female 母头
3 Pin	MB03P1RPASB	MB03P2RPASB
4 Pin	MB04P1RPASB	MB04P2RPASB
5 Pin	MB05P1RPBSB	MB05P2RPBSB

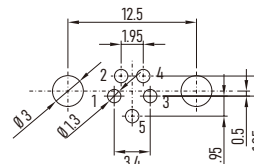
PCB Layout Reference 孔位分布与钻孔建议



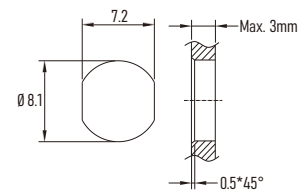
3P Male 公头



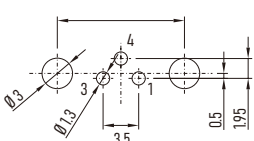
4P Male 公头



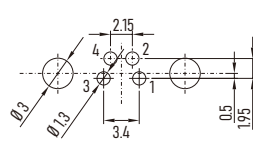
5P Male 公头



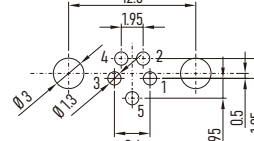
Male Recommended Panel Cut-out
公头 面板开孔建议



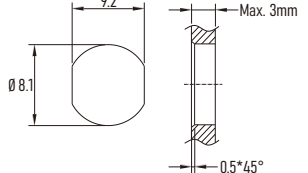
3P Female 母头



4P Female 母头



5P Female 母头



Female Recommended Panel Cut-out
母头 面板开孔建议