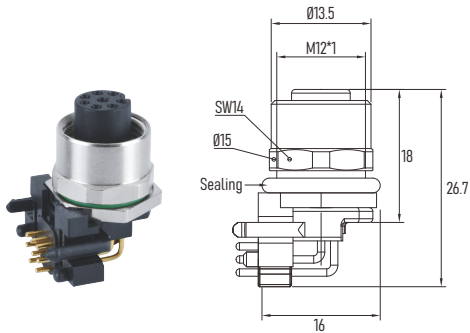
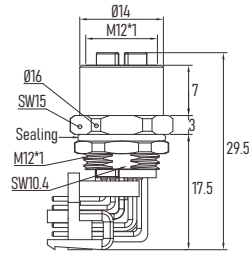


M12 female panel connector, front side fastening, PCB Contacts, with 90 degree PCB contacts
 M12 母头 板端连接器 板前锁 PCB弯针型

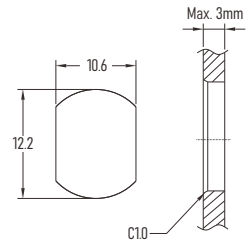
M12 A-Code



M12 X-Code



Recommended Panel Cut-out 面板开孔建议



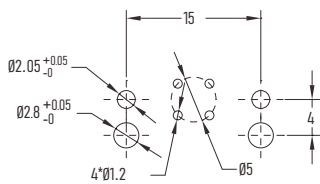
Connector Technical data 技术参数

Contacts No.	Pin位/芯数	4Pin A-Code	4Pin D-Code	5Pin A-Code	8Pin A-Code	8Pin X-Code
Front View	正视图					
Reference Standard	参照标准	IEC 61076-2-101				
Rated current	额定电流	4A			2A	0.5A
Rated voltage	额定电压	250V		60V	30V	50V
Impulse voltage	脉冲高压	2500V		2500V	1500V	1500V
Locking system	锁紧方式	M12 x 1.0 screw / M12 螺丝锁紧				
Tightening Torque	螺丝扭矩	Recommend/ 建议:0.6Nm, Max/ 最大:1.0Nm				
Termination	接线方式	PCB Dip Soldering / PCB 浸焊				
Rated temperature	温度范围	-25 °C ... +80 °C; -40 °C ... +105 °C				
Insulation resistance	绝缘电阻	≥100MΩ				
Contact resistance	接触电阻	≤5mΩ				
Contact carrier	胶芯材料	PA66 + GF				
Screw nut	螺丝材料	Brass, CNC, Nickel-plated 黄铜 镀镍 机加工 / Zinc Die-cast with Nickel Plated 锌合金 镀镍 压铸件				
Contact	Pin针端子	Brass 黄铜				
Contacts plating	端子镀层	Au (Gold) 镀金				
O-ring	密封圈	FKM/ Silicon 氟橡胶/硅胶				
Protection degree	防护等级	IP67, IP68				
Pollution degree	污染等级	3				

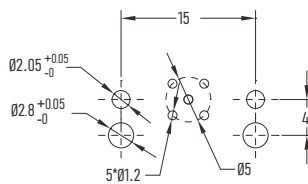
Ordering No. 订购料号

Coding 防呆键	4 Pin	5 Pin	8 Pin
A-Code	MC04P2RPAB12	MC05P2RPAB12	MC08P2RPAB12
D-Code	MC04P2RPDB12		
X-Code			MC08P2RPXSB12

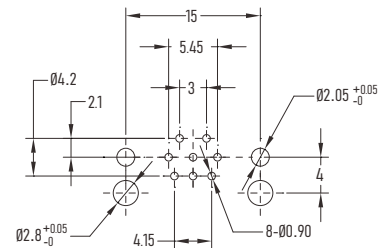
PCB Layout Reference 孔位分布与钻孔建议



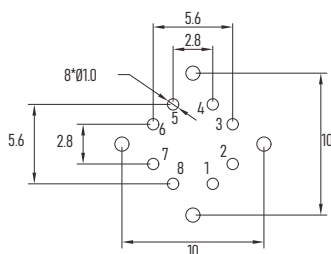
PCB layout (advice)
M12 4Pin female



PCB layout (advice)
M12 5Pin female



PCB layout (advice)
M12 8Pin female



PCB layout (advice)
M12 female 8Pin X-CODE