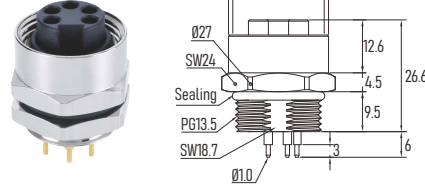
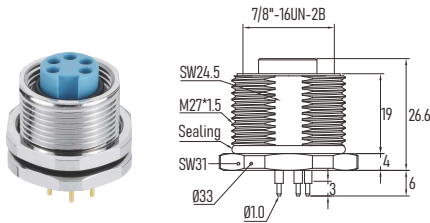


7/8" Mini-Change female panel connector, front/ rear mount, with PCB Contacts
 7/8" Mini 母头 板端连接器 前锁/ 后锁 PCB焊针型

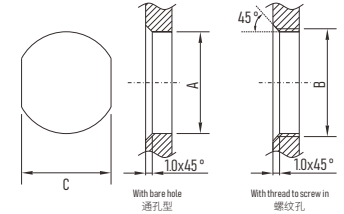
Front Fastened 前锁

Rear Fastened 后锁

Recommended Panel Cut-out 面板开孔建议



Chassis side	7/8"-16UN-2B	PG13.5	1/2"14-NPT
A	27.2 $^{+0.1}_0$	20.6 $^{+0.1}_0$	21.4 $^{+0.1}_0$
B	7/8"-16UN-2B	PG13.5	1/2"14-NPT
C	24.7 $^{+0.1}_0$	18.9 $^{+0.1}_0$	N/A



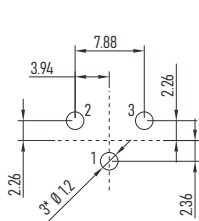
Connector Technical data 技术参数

Contacts No. Pin位/芯数	3Pin	4Pin	5Pin
Front View 正视图			
Rated current 额定电流	13A, 8A		
Rated voltage 额定电压	300V		
Impulse voltage 脉冲高压	2500V		
Locking system 锁紧方式	7/8" screw / 7/8" 螺丝锁紧		
Tightening Torque 螺丝扭矩	Recommend/ 建议:2.0Nm, Max/ 最大:2.5Nm		
Termination 接线方式	PCB Dip Soldering / PCB浸焊		
Rated temperature 温度范围	-25 °C ... +80 °C		
Insulation resistance 绝缘电阻	≥100MΩ		
Contact resistance 接触电阻	≤5mΩ		
Contact carrier 胶芯材料	TPU + GF		
Screw nut 螺丝材料	Brass, CNC, Nickel-plated 黄铜 镀镍 机加工		
Contact Pin针端子	Phosphor bronze 磷青铜		
Contacts plating 端子镀层	Au (Gold) 镀金		
O-ring 密封圈	FKM/ Silicon 氟橡胶/硅胶		
Protection degree 防护等级	IP67, IP68		
Pollution degree 污染等级	3		

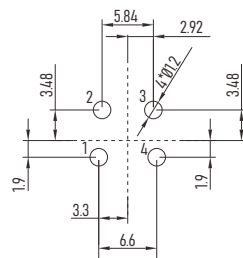
Ordering No. 订购料号

Poles 芯数	Panel Front Side Fastening 板前锁		Panel Rear Side Fastening 板后锁	
	7/8"-16UN-2A Chassis Side 锁板螺纹		7/8"-16UN-2A Chassis Side 锁板螺纹	PG13.5 Chassis Side 锁板螺纹
3 Pin	MFO3P2LPAB		MFO3P4LPAB	MFO3P4LPABP13
4 Pin	MFO4P2LPAB		MFO4P4LPAB	MFO4P4LPABP13
5 Pin	MFO5P2LPAB		MFO5P4LPAB	MFO5P4LPABP13

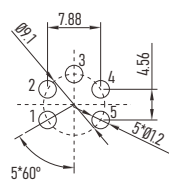
PCB Layout Reference 孔位分布与钻孔建议



3P (Pin Ø1.0)



4P (Pin Ø1.0)



5P (Pin Ø1.0)